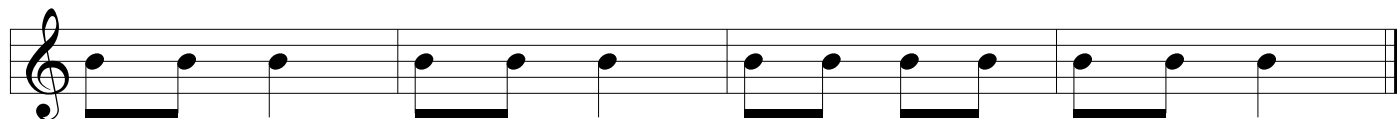
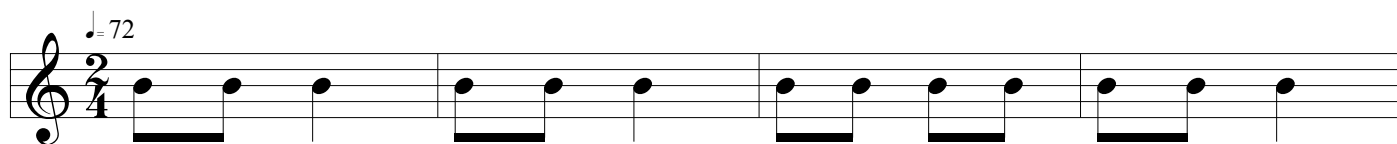
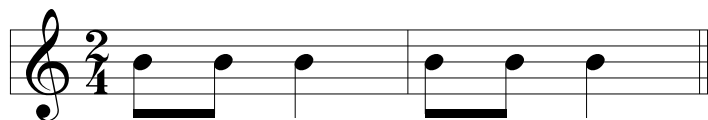


Sing We and Chant It!

100
Duple

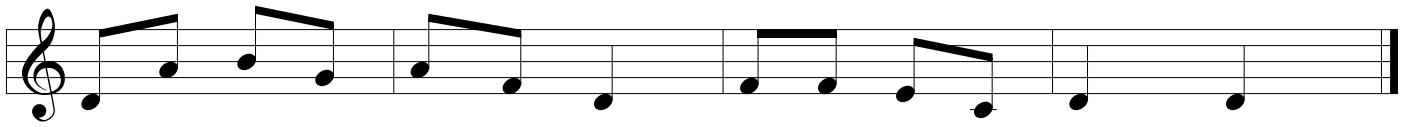
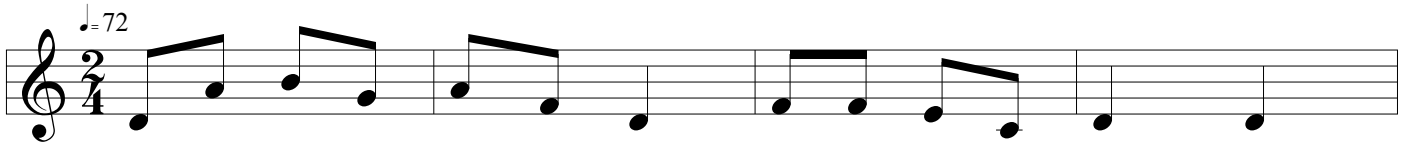
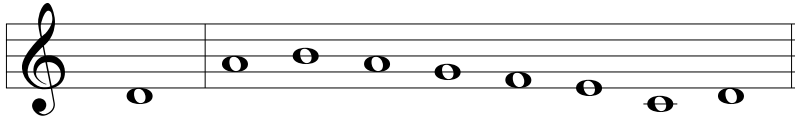
Mary Ellen Pinzino



Sing We and Chant It!

1100 Dorian

Mary Ellen Pinzino



Come Children, Sing!

2

Everybody Follow Me!

Mary Ellen Pinzino

The image shows two staves of musical notation in 2/4 time. The first staff contains the melody for the first line of the song, with lyrics 'Eve - ry - bod - y fol - low me, fol - low me, fol - low me!'. The second staff contains the melody for the second line, with lyrics 'Eve - ry - bod - y fol - low me, eve - ry - where I go.' The music is written in a simple, child-friendly style with a treble clef and a key signature of one flat.

Eve - ry - bod - y fol - low me, fol - low me, fol - low me!

Eve - ry - bod - y fol - low me, eve - ry - where I go.

Suggestions:

Follow the leader.

Vary movements (raise arms, bend at waist, crawl, hop).

WIGGLE YOUR GIGGLE!